



EMLF

ENERGY & MINERAL LAW FOUNDATION

2026
ANNUAL
SPONSORSHIP
PROSPECTUS

www.emlf.org
anna@emlf.org
(859) 231-0271



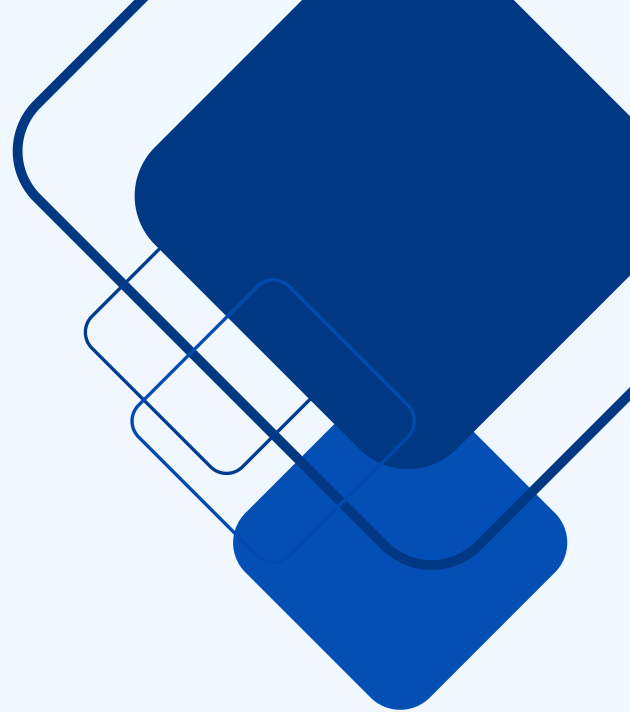
ABOUT EMLF

The Energy & Mineral Law Foundation is a national nonprofit educational organization that fosters the study of the laws and regulations related to natural resource development and energy use. The Foundation is an Accredited Provider of Mandatory Continuing Legal Education programs, AAPL, and other professional recertification credits.

Since its inception in 1980, the Energy & Mineral Law Foundation has held an Annual Institute each summer that brings together energy practitioners from all over the country for three days of continuing education sessions and networking events, and in the years since has added many regular Special Institutes and online programming. For many of EMLF's constituents, these programs are a staple of their annual CLE schedule, and also an unparalleled opportunity for networking.

MORE INFORMATION:

www.emlf.org



LEADERSHIP

President

Stefanie L. Burt
EQT Corporation

Vice-President

Andrew B. McCallister
Greylock Energy

Secretary

Jessica Brisendine
Hendrickson & Long PLLC

Treasurer

Armando Benincasa
Steptoe & Johnson PLLC

Past Presidents

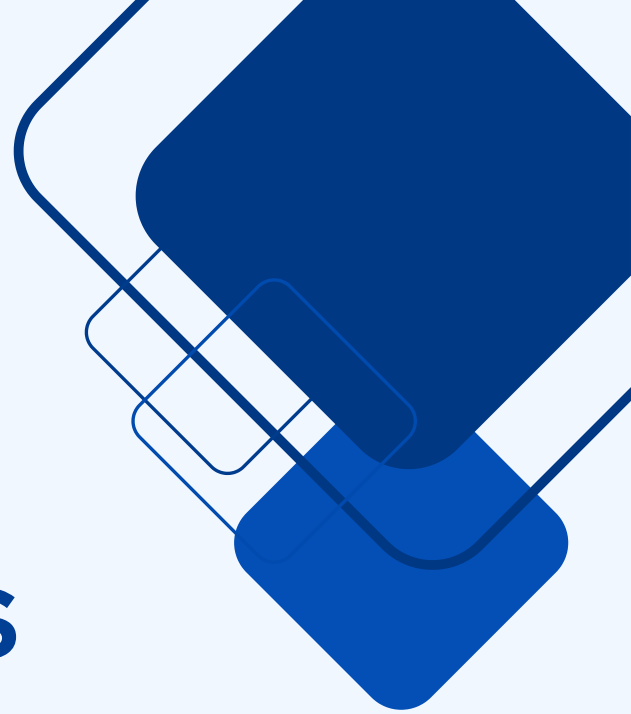
Travis L. Brannon
K&L Gates
Britt A. Freund
Steptoe & Johnson, PLLC

Executive Committee

Jamie Chapman
Antero Resources
Guy Hensley
Warrior Met Coal
Kara Herrstein
Bricker Graydon
Whitney Kerns
Bowles Rice
Lucas Liben
Reed Smith
Timothy B. McGranor
Vorys, Sater, Seymour and Pease



ABOUT SPONSORSHIPS



Sponsorships help to provide the high-quality education programming that the Energy & Mineral Law Foundation produces each year. Sponsorships also defray the costs of the important networking opportunities at the in-person conferences such as receptions and breakfasts and the cost of the technology used for the virtual programming. Sponsors are recognized at all programming for their contribution to the success of EMLF, as well as on the website and in printed and electronic communications, and have their logo prominently placed during the sponsored conference.

EMLF offers three levels of annual sponsorship, which also help to support the organization through the planning and execution of its conferences: the Power Patron, an exclusive sponsorship, as well as Pillar Patrons and Production Patrons. Each level comes with a variety of benefits which are discussed in these materials.

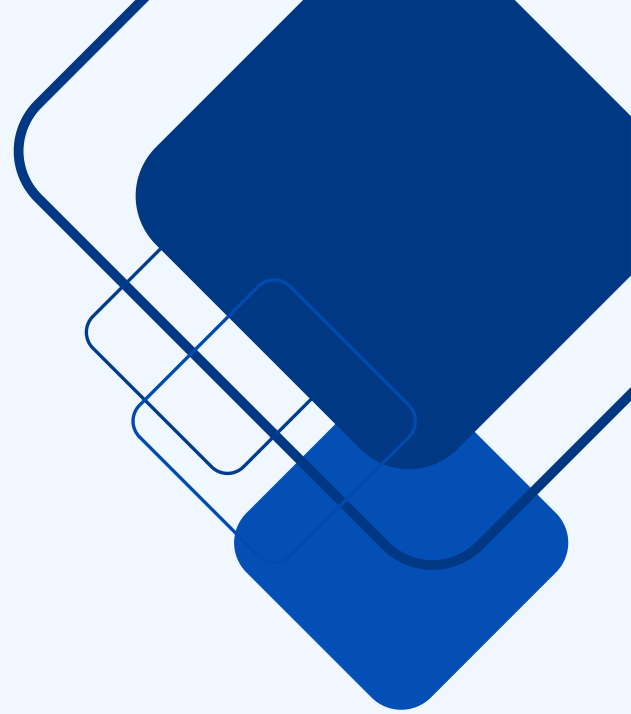
Conference-specific sponsorships are also available in 2026, with EMLF planning four conference events, including the 47th Annual Institute in Charleston, South Carolina.

MORE INFORMATION:

www.emlf.org



ABOUT EMLF ATTENDEES



Your sponsorship puts your organization in front of EMLF's large and diverse membership. EMLF's membership and conference attendees are not just law firms! Members of EMLF also hail from private energy companies, non-profit organizations, state and federal governments, and educational institutions. Approximately one-third of our member organizations are private energy corporations, while nearly 20% are educational institutions, government agencies, or non-profit organizations.

EMLF held two in-person events in 2025, as well as a virtual Special Institute, and several webinars and virtual workshops. EMLF's educational content reached attendees from 125 different entities, with slightly over one half being private energy companies, government agencies, non-profit organizations, or educational institutions, while the remainder were law firms across the country. In 2026, we plan to continue a mix of in-person and virtual programming, which will maximize the effectiveness of your annual sponsorship. Annual sponsors also reach countless more professionals via EMLF's member and non-member mailing list, growing social media following, publications, and website.

**To take advantage of an annual sponsorship opportunity,
please e-mail EMLF Executive Director, Anna Fletcher,
at anna@emlf.org or call (859) 231-0271.**

Overview of Annual Sponsorship Opportunities

Power Patron - \$15,000

- exclusive sponsorship
- name sponsor for all 2026 conferences
- 10 total complimentary registrations which may be used by the sponsor or provided to clients

Pillar Patron - \$10,000

- name sponsor for any two 2026 conferences
- 7 total complimentary registrations which may be used by the sponsor or provided to clients

Production Patron - \$5,000

- name sponsor for any one 2026 conference
- 3 total complimentary registrations which may be used by the sponsor or provided to clients

All sponsorships include:

- Linked logo on EMLF website homepage
- Logo on EMLF e-news and other electronic communications to members
- Logo on electronic communications to non-member mailing list
- Complimentary registrations to conferences

The following pages describe each level in more detail.

To take advantage of an annual sponsorship opportunity, please e-mail EMLF Executive Director, Anna Fletcher, at anna@emlf.org or call (859) 231-0271.

Power Patron

EMLF is happy to welcome only one sponsor as its exclusive 2026 Power Patron, for a sponsorship of \$15,000.

Marketing Benefits

- Linked Logo on EMLF website homepage
- Logo on EMLF e-News and other electronic communications to members
- Logo on electronic communications to non-member listserv

Conferences

- Name sponsor at all 2026 conferences
- Opportunity to introduce keynote speaker at Annual Institute or conference of choice
- Recognition during welcome remarks, and throughout conference
- Logo placement in all printed and electronic communications for conference
- Full page advertisement in conference written materials handout
- Logo placement (with link to sponsor website) on registration page for conference
- Logo placement at registration area for conference
- Logo/advertisement scrolling on display throughout conference
- Complimentary reception sponsorship which includes logo placement at the reception, and recognition before the reception
- Contact information for conference registrants (attendees will opt-in to be contacted by sponsors during the registration process)
- Opportunity to place company-provided marketing materials or promotion items at conference
- Patron nametag ribbons for all company representatives at conference

Registrations

- 3 complimentary registrations of any type for the Annual Institute
- 1 complimentary young professional registration for the Annual Institute
- 4 total complimentary registrations of any type for other conferences held during 2026
- 2 total complimentary young professional registrations for other conferences held during 2026
- Complimentary registrations may be provided to clients or other colleagues.

To qualify as a young professional, a registrant must be under 40 or have less than ten years experience.

To take advantage of an annual sponsorship opportunity, please e-mail EMLF Executive Director, Anna Fletcher, at anna@emlf.org or call (859) 231-0271.

Pillar Patron

EMLF is happy to welcome an unlimited number of sponsors as 2026 Pillar Patrons, for a sponsorship of \$10,000.

Marketing Benefits

- Linked Logo on EMLF website homepage
- Logo on EMLF e-News and other electronic communications to members
- Logo on electronic communications to non-member listserv

Conferences

- Name sponsor at any two 2026 conferences (sponsor choice)
- Recognition during welcome remarks, and throughout conference
- Logo placement in all printed and electronic communications for conference
- Half page advertisement in conference written materials handout
- Logo placement (with link to sponsor website) on registration page for conference
- Logo placement at registration area for conference
- Logo/advertisement scrolling on display throughout conference
- Complimentary reception sponsorship which includes logo placement at the reception, and recognition before the reception
- Contact information for conference registrants (attendees will opt-in to be contacted by sponsors during the registration process)
- Opportunity to place company-provided marketing materials or promotion items at conference
- Patron nametag ribbons for all company representatives at conference

Registrations

- 1 complimentary registration of any type for the Annual Institute
- 1 complimentary young professional registration for the Annual Institute
- 3 total complimentary registrations of any type for other conferences held during 2026
- 1 total complimentary young professional registration for other conferences held during 2026
- Complimentary registrations may be provided to clients or other colleagues.

To qualify as a young professional, a registrant must be under 40 or have less than ten years experience.

To take advantage of an annual sponsorship opportunity, please e-mail EMLF Executive Director, Anna Fletcher, at anna@emlf.org or call (859) 231-0271.

Production Patron

EMLF is happy to welcome an unlimited number of sponsors as 2026 Production Patrons, for a sponsorship of \$5,000.

Marketing Benefits

- Linked Logo on EMLF website homepage
- Logo on EMLF e-News and other electronic communications to members
- Logo on electronic communications to non-member listserv

Conferences

- Name sponsor at any one 2026 conferences (sponsor choice)
- Recognition during welcome remarks, and throughout conference
- Logo placement in all printed and electronic communications for conference
- Quarter page advertisement in conference written materials handout
- Logo placement (with link to sponsor website) on registration page for conference
- Logo placement at registration area for conference
- Logo/advertisement scrolling on display throughout conference
- Complimentary reception sponsorship which includes logo placement at the reception, and recognition before the reception
- Contact information for conference registrants (attendees will opt-in to be contacted by sponsors during the registration process)
- Opportunity to place company-provided marketing materials or promotion items at conference
- Patron nametag ribbons for all company representatives at conference

Registrations

- 1 complimentary registration of any type for the Annual Institute
- 1 complimentary registration of any type for another conference held during 2026
- 1 complimentary young professional registration for another conference held during 2026
- Complimentary registrations may be provided to clients or other colleagues.

To qualify as a young professional, a registrant must be under 40 or have less than ten years experience.

**To take advantage of an annual sponsorship opportunity, please e-mail
EMLF Executive Director, Anna Fletcher, at anna@emlf.org or call (859) 231-0271.**

Overview of Conference Specific Sponsorship Opportunities

47th Annual Institute

June 14-16, 2026
Charleston, South Carolina

Fall Symposium

October 2026
Lexington, Kentucky

Special Institutes

EMLF is planning two Special Institutes in 2026: our biennial Safety Seminar, and a joint institute with the American Association of Professional Landmen.

To take advantage of an annual sponsorship opportunity, please e-mail EMLF Executive Director, Anna Fletcher, at anna@emlf.org or call (859) 231-0271.

All sponsorships include:

- EMLF conference website recognition
- Logo/advertisement scrolling on display throughout conference
- Quarter page advertisement in written conference materials handout
- Patron nametag ribbons for all attending representatives
- Opportunity to place company-provided marketing materials or promotion items at conference

Annual Institute Sponsorship Opportunities

\$2,500 Level

Nametag Lanyards

– 1 available

Logo provided to all attendees

SOLD

Continental Breakfast

– 2 available

Logo on display at breakfast & option to provide logo napkins

Break

– 3 available

Logo on display at sponsored break & option to provide logo napkins

Wifi and Conference Information Page

– 1 available

Logo on display on conference information website, agenda, and download written conference materials, logo on display wherever wifi password is shared, and name as wifi password where available

SOLD

All sponsorships include:

- EMLF conference website recognition
- Logo/advertisement scrolling on display throughout conference
- Quarter page advertisement in written conference materials handout
- Patron nametag ribbons for all attending representatives
- Opportunity to place company-provided marketing materials or promotion items at conference

Annual Institute sponsorship opportunities continue on next page.

Annual Institute Sponsorship Opportunities

\$2,000 Level

Coffee and Beverage Station Sponsor

– 1 available

Logo on display at station and
insulated coffee cup sleeve
provided to attendees

SOLD

\$1,500 Level

Reception - unlimited available

Logo on display at reception

Conference Bag – ¹/~~2~~ available

Logo on bags provided to all
attendees

\$1,000 Level

Notepads – 1 available

Logo on notepad (sponsor supplies notepads)

SOLD

Charging Station – 1 available

Logo on charging station

SOLD

To take advantage of a sponsorship
opportunity, please e-mail EMLF Executive
Director, Anna Fletcher, at anna@emlf.org or
call (859) 231-0271.

All sponsorships include:

- EMLF conference website recognition
- Logo/advertisement scrolling on display throughout conference
- Quarter page advertisement in written conference materials handout
- Patron nametag ribbons for all attending representatives
- Opportunity to place company-provided marketing materials or promotion items at conference

Fall Symposium Sponsorship Opportunities

\$2,500 Level

Nametag Lanyards

– 1 available

Logo on nametags provided to all attendees

Continental Breakfast

– 2 available

Logo on display at breakfast & option to provide logo napkins

Break

– 3 available

Logo on display at sponsored break & option to provide logo napkins

Wifi and Conference Information Page

– 1 available

Logo on display on conference information website which includes agenda and link to download written conference materials, logo on display wherever wifi password is shared, and name as wifi password where available

All sponsorships include:

- EMLF conference website recognition
- Logo/advertisement scrolling on display throughout conference
- Quarter page advertisement in written conference materials handout
- Patron nametag ribbons for all attending representatives
- Opportunity to place company-provided marketing materials or promotion items at conference

Fall Symposium sponsorship opportunities continue on next page.

Fall Symposium Sponsorship Opportunities

\$2,000 Level

Coffee and Beverage Station Sponsor

– 1 available

Logo on display at coffee station and on protective coffee cup sleeve provided to attendees

\$1,500 Level

Reception - unlimited available

Logo on display at reception

\$1,000 Level

Notepads – 1 available

Logo on notepads provided to all attendees

(Sponsor supplies notepads)

Charging Station – 1 available

Logo on display at charging station

To take advantage of a sponsorship opportunity, please e-mail EMLF Executive Director, Anna Fletcher, at anna@emlf.org or call (859) 231-0271.

All sponsorships include:

- EMLF conference website recognition
- Logo/advertisement scrolling on display throughout conference
- Quarter page advertisement in written conference materials handout
- Patron nametag ribbons for all attending representatives
- Opportunity to place company-provided marketing materials or promotion items at conference

Exhibitor and Advertising Opportunities for Annual Institute and Fall Symposium

Exhibitor- \$1,500- 8 available

- dedicated 8 foot table near the conference registration and information table that is exclusively for exhibitor
- opportunity to provide personnel to staff table and interact with attendees during conference
- EMLF conference website recognition
- Logo/advertisement scrolling on display throughout conference
- Listing in written conference materials handout

Advertising

Power Point Slide - \$125

Included in slide show that plays on continuous loop during breaks and in the conference lobby. Slide is designed and submitted by advertiser and subject to EMLF approval. Widescreen 16:9 ratio.

Half Page Ad in Conference Materials - \$100

Your ad appears alongside the presentation materials in a PDF that is distributed electronically to each attendee. Ad is designed and submitted by advertiser and subject to EMLF approval. 5in x 7in (vertical or horizontal).

Quarter Page Ad in Conference Materials - \$50

Your ad appears alongside the presentation materials in a PDF that is distributed electronically to each attendee. Ad is designed and submitted by advertiser and subject to EMLF approval. 5in x 3.5in (vertical or horizontal).

To advertise or become an exhibitor, please e-mail Anna Fletcher, at anna@emlf.org or call (859) 231-0271.